



**Electrolux**  
PROFESSIONAL

## Standard Preparation 1200 mm Solid Wall Shelf with Brackets

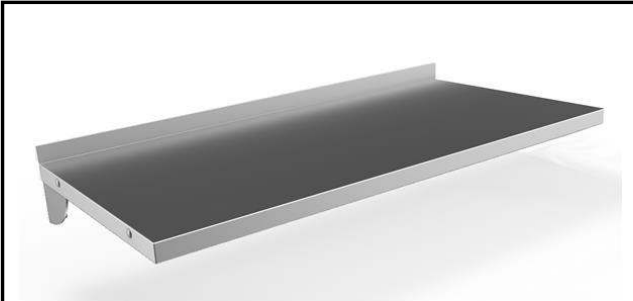
ITEM # \_\_\_\_\_

MODEL # \_\_\_\_\_

NAME # \_\_\_\_\_

SIS # \_\_\_\_\_

AIA # \_\_\_\_\_



132824 (WSS124N)

Solid Wall Shelf with  
brackets, 1200mm

### Short Form Specification

Item No. \_\_\_\_\_

Made from 304 AISI stainless steel, 1mm in thickness.  
Upturned edges. Integral radiused rear upstand, h=30mm.  
Wall brackets allow the shelf to be positioned at different  
heights.

### Main Features

- Smooth surfaces, rounded corners, absence of edges and rear upstand facilitate cleaning operations.
- Sturdiness, stability and reliability of table accurately tested.

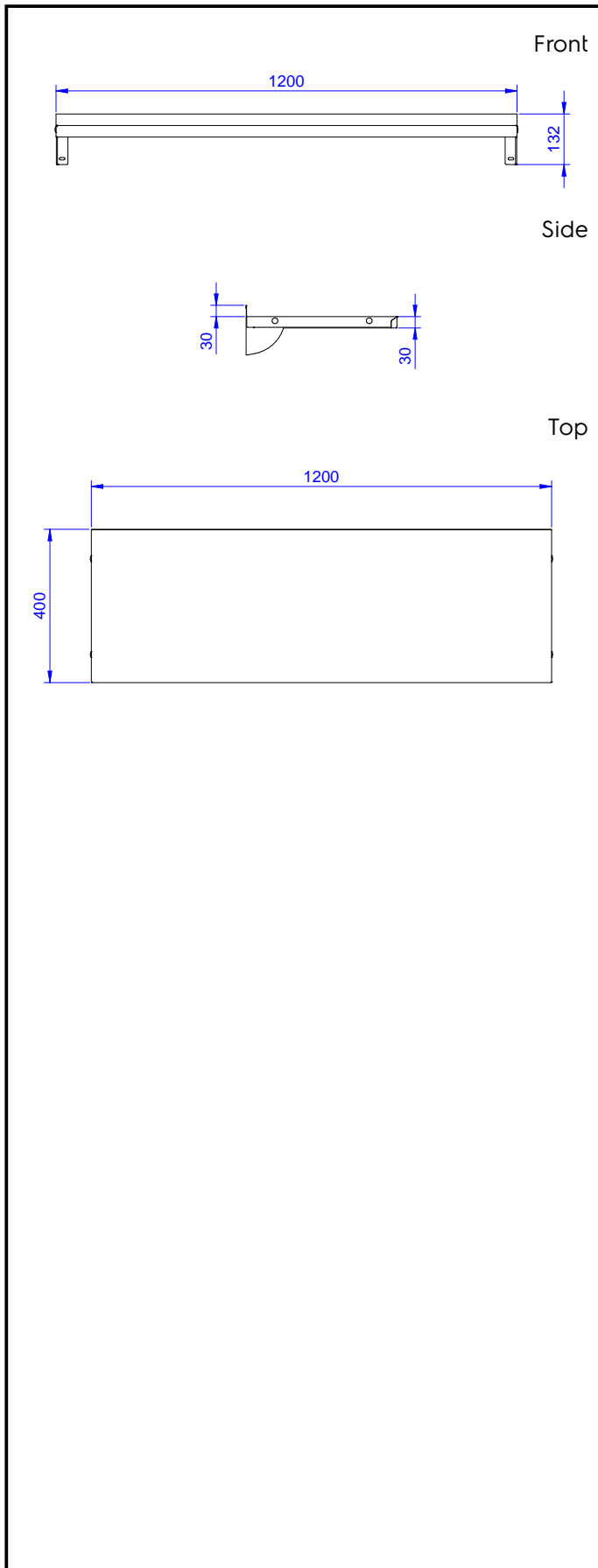
### Construction

- Made entirely in 304 AISI stainless steel, 10/10 in thickness; with a Scotch Brite finish.
- Upturned edges, 50 mm high, to guarantee operator safety.
- Incorporates a rear upstand to avoid spillage between wall and shelf.
- 100 mm upstand with 10 mm radiused corner and 13 mm deep, designed to be used against a wall.

APPROVAL: \_\_\_\_\_



Experience the Excellence  
[www.electroluxprofessional.com](http://www.electroluxprofessional.com)



**Key Information:**

|                              |         |
|------------------------------|---------|
| External dimensions, Width:  | 1200 mm |
| 132824 (WSS124N)             | 1200 mm |
| External dimensions, Depth:  | 400 mm  |
| External dimensions, Height: | 30 mm   |
| Upstand Dimensions, Height:  | 23 mm   |
| Upstand Dimensions, Depth:   | 2 mm    |
| Upstand Dimensions, Radius:  | R=10    |
| Net weight:                  | 5 kg    |